

Handheld Foam Sprayer Instructions

Please read and follow this operation manual carefully before use • For safety reasons, children and those who are not familiar with the operating instructions are not allowed to use the sprayer.

PLEASE KEEP THIS INSTRUCTIONS PROPERLY

I. POINTS FOR ATTENTION

1.This sprayer is suitable for household cleaning and car cleaning to spray solvent-free liquids. Prohibited for spraying Acid, alcohol, gasoline and other highly corrosive, flammable and explosive liquids. If not, the liquid causes product damage and accidents, the company reserves the right not to provide after-sales and can not take the related responsibilities caused by this.

2.Do not exceed the maximum liquid level, (refers to the highest warning line of the bottle body or 2/3 of the bottle body capacity). There needs to be enough space in the bottle to store the air pressure.

3.Pressurize until you feel a strong resistance. Please do not over pressurize, so as not to affect the life of the product.

4.After each use, the pressure should be released, the liquid in the bottle should be emptied, and the sprayer should be carefully cleaned and spray with clean water to avoid no foaming after the next use.

5.Please store the product in a cool place to avoid prolonged exposure to the sun to cause damage.

6.This product was tested before leaving the factory, and it is normal for a small amount of water to remain in the pot.

7.Please keep out of reach of children. (Please do not use to Minors, pay attention to small pieces)

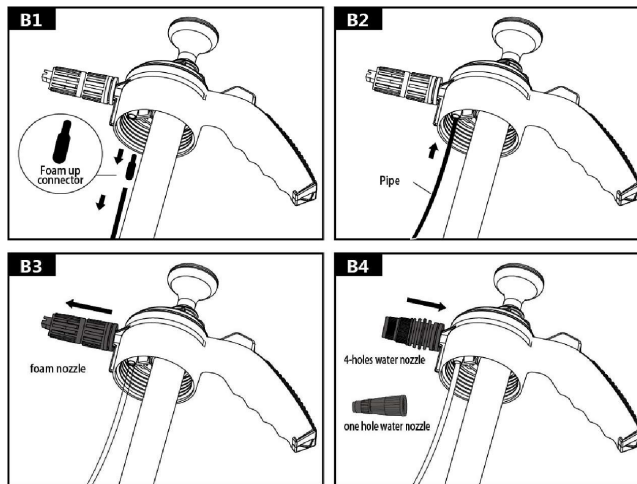
8.If you find that the handle feels heavier when you pull it up, please unscrew the cylinder and add lubricating oil to the piston.

Technical parameters

Maximum Capacity	2L
Maximum Pressure	3Bar (43.5PSI)
Working Temp	De 5°C à 40°C



Modification de lance mousse à pulvérisateur d'eau



II. OPERATION INSTRUCTIONS

1. Pull out the pipe and the foam up connector (Refer to Diagram B1), than keep the foam up connector properly.
2. Insert the pipe to the hole inside of sprayer head directly. (Refer to Diagram B2)
3. Anticlockwise rotation to remove the foam nozzle. (Refer to Diagram B3)
4. Clockwise rotation to install the water sprayer nozzle. (Refer to Diagram B4)

III. OPERATION INSTRUCTIONS

1.Install the sealing gasket and nozzle step by step. (Refer to Diagram A0)

2.Unscrew the sprayer head counterclockwise. (Refer to Diagram A1)

3.Stir the water and detergent in a suitable ratio evenly. (You can shake the body up and down after tightening the head),In winter, in order to easier dissolve solution, can use warm water(not exceed 40°C)

to adjust it. (Refer to Diagram A2)

(Note: Normally for car wash, the ratio of detergent to water is 1:50 (20ml car wash detergent is about 1 liter of water. The ratio of different cleaning agents is not completely the same, users need to debug and test by themselves).

4.Put the sprayer head back to the bottle body and tighten it.

5.Pull the lever up and down to pressurize the body of sprayer. When there is strong resistance, stop pressurizing. (Refer to Diagram A3)

6.Aim at the object to be sprayed and press the switch to start working. When the spray pressure drops, please pump-up air to ensure can continuous spraying. (Refer to Diagram A4)

7.After the work is finished, unscrew the sprayer head, pour out the remaining liquid in the bottle, and wash it.

IV. Malfunction Solution

Problem	Cause	Solution
Can not pressurize	Sprayer head has not screw tightly	Screw tightly the sprayer head
	Air Chamber is loose	
	0-ring inside the bottle is not positioned correctly	Check the 0-ring
	0-ring inside the cylinder is damaged	Replace the 0-ring
Enough pressure in the bottle, but do not spray or spray weak foam	Nozzle clogged	Unscrew the nozzle to check and clean
	Solution concentration is too high	Add water to reduce the concentration
	The detergent and water are not evenly mixed	Stir well or shake the body up and down
Enough pressure in the bottle, spray time is very short	Solution concentration is too low	Add detergent to increase concentration
	Solution concentration is too high	Add water to reduce the concentration

